

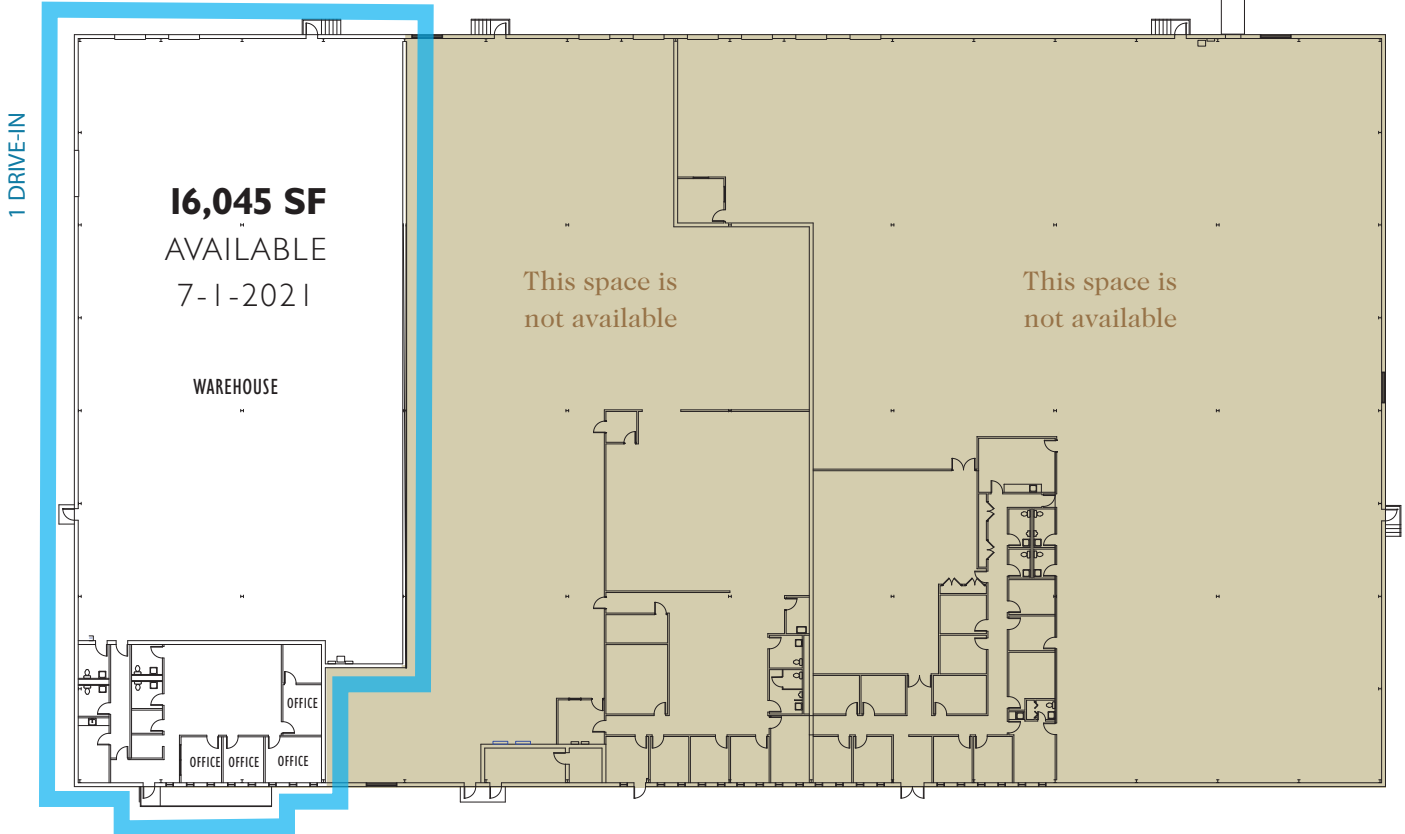
# Industrial Space Available

Move Your Business **closer** to the Port of NY & NJ

2075 91st Street, North Bergen, New Jersey



2 DOORS - 8' x 8'



For leasing information, please contact:

**Charlie Reese** • 201-272-5202  
[charlie.reese@hartzmountain.com](mailto:charlie.reese@hartzmountain.com)

**Rick Vanderbeck** • 201-272-5223  
[rick.vanderbeck@hartzmountain.com](mailto:rick.vanderbeck@hartzmountain.com)

**Stephen Benoit** • 201-272-5214  
[stephen.benoit@hartzmountain.com](mailto:stephen.benoit@hartzmountain.com)