

# Industrial Office Available

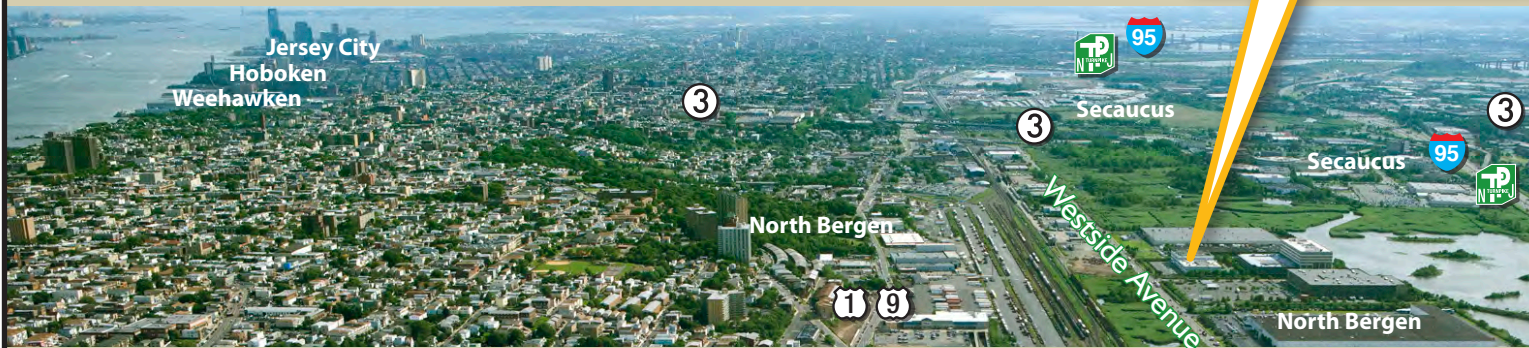
Move Your Facility **closer** to Manhattan

**NORTH BERGEN** – direct access to

Area Provider: PSE&G • Multiple Fiber Providers

5801 Westside Avenue  
North Bergen, New Jersey

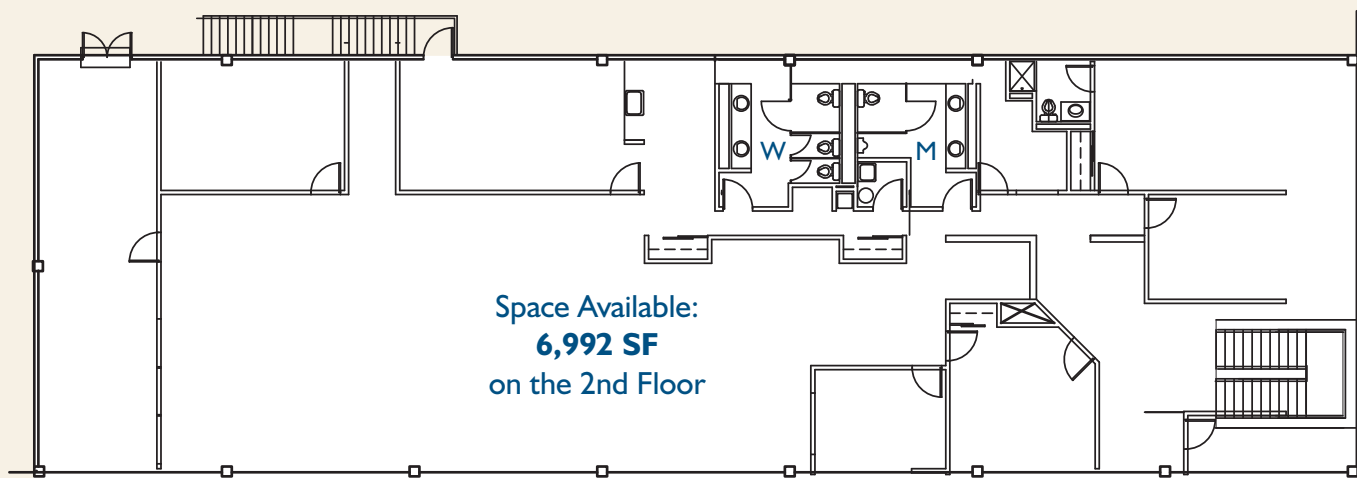
5801 Westside Avenue



## Available:

6,992 SF Office Suite

- The building located off Route 1 & 9. The building is within minutes of Manhattan and Newark International Airport. The Garden State Parkway, Routes 17, 46, 1 & 9, and arteries to I-80, I-95 and I-280 are easily accessible.
- Unit is sub-metered for gas & electric. Pro-rata share of the water.
- Available: Immediately



0620

For leasing information, please contact:

Ernie Christoph • 201-272-5201

[ernie.christoph@hartzmountain.com](mailto:ernie.christoph@hartzmountain.com)

Charlie Reese • 201-272-5202

[charlie.reese@hartzmountain.com](mailto:charlie.reese@hartzmountain.com)

Rick Vanderbeck • 201-272-5223

[rick.vanderbeck@hartzmountain.com](mailto:rick.vanderbeck@hartzmountain.com)

HARTZ

