

SPACE

Entire 3rd Floor – 3,152 RSF

BASE RENTAL

Upon request

POSSESSION

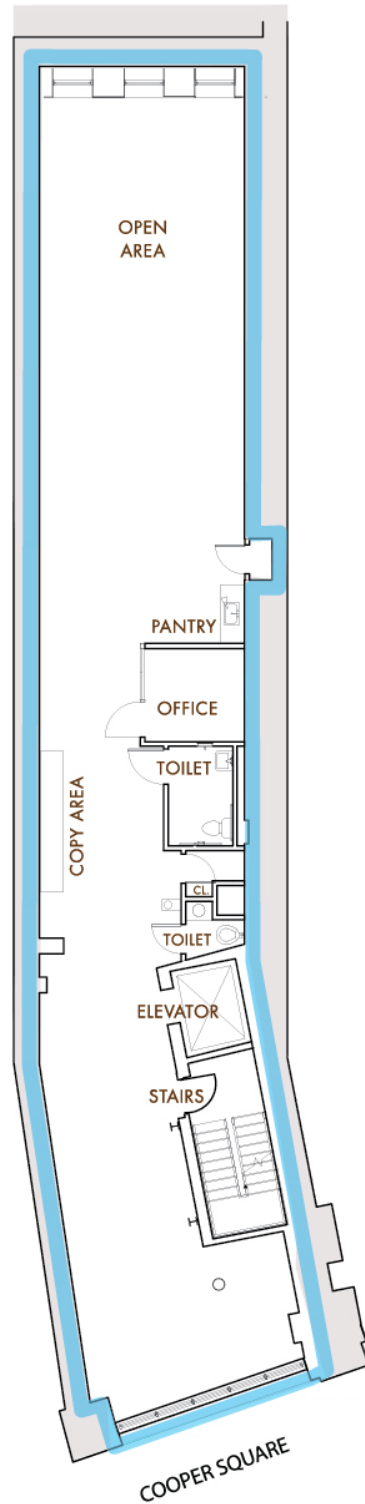
Immediate

TERM

5 to 10 years

DESCRIPTION

- Move in condition
- Wood floors throughout
- 9'-7" open ceilings
- Front and rear windows



32 COOPER SQUARE

3,152 RSF | Entire 3rd Floor

FOR MORE INFORMATION, PLEASE CONTACT:

Gregory Gang

Executive Managing Director & Principal
ggang@lee-associates.com
M 646.662.3546

Stephanie Moore

Senior Director
smoore@lee-associates.com
M 347.824.9872

Catherine O'Toole

Executive Managing Director & Principal
cotoole@lee-associates.com
M 212.961.6252



All information supplied is from sources deemed reliable and is furnished subject to errors, omissions, modifications, removal of the listing for sale or lease, and to any listing conditions, including the rates and manner of payment of commissions for particular offerings imposed by principals or agreed by this Company, the terms of which are available to principals or duly licensed brokers. Any square footage dimensions set forth are approximate.