

34-36 Cooper Square



34-36 Cooper Square

New York, NY The Bowery / Noho Historic District

OFFICE SPACE AVAILABLE



34-36 COOPER SQUARE



6th Floor (Entire)

8,062 RSF

5th Floor (Partial)

2,863 RSF

34-36 Cooper Square is located in the Noho Historic District, close to Cooper Union. The district is considered to be one of the most desirable neighborhoods in Manhattan. Its small size and central location contributes to a high demand. The area now boasts many tech companies.

AVAILABLE
JULY 1, 2017

For more information, please contact:

Glenn Frankel

201.272.5307

Glenn.Frankel@HartzMountain.com

HartzMountain.com

Hartz Mountain Industries, Inc.
400 Plaza Drive, Secaucus, NJ

PO Box 1515, Secaucus, NJ 07096-1515

34-36 Cooper Square

New York, NY The Bowery / Noho Historic District

For more information,
please contact:
[Glenn Frankel](#)
201.272.5307
Glenn.Frankel@HartzMountain.com

HartzMountain.com



Booming Bowery Neighborhood!

34-36 Cooper Square is surrounded by some of the hottest locations in the city, including:

1. The Standard Hotel
2. New Museum
3. Cooper Union Building
4. Bowery Hotel
5. Morrison Hotel Gallery
6. Norman Foster designed Sperone – Westwater Gallery site
7. Blue & Cream
8. McSorley's Old Ale House
9. 2 Cooper Square
10. B Bar
11. Bowery Electric
12. Cherche MIDI
13. Whole Foods

6/N/R subways and M2, M3, and M5 buses are within 2 blocks, and only 6 blocks from the B,D,F and M trains.

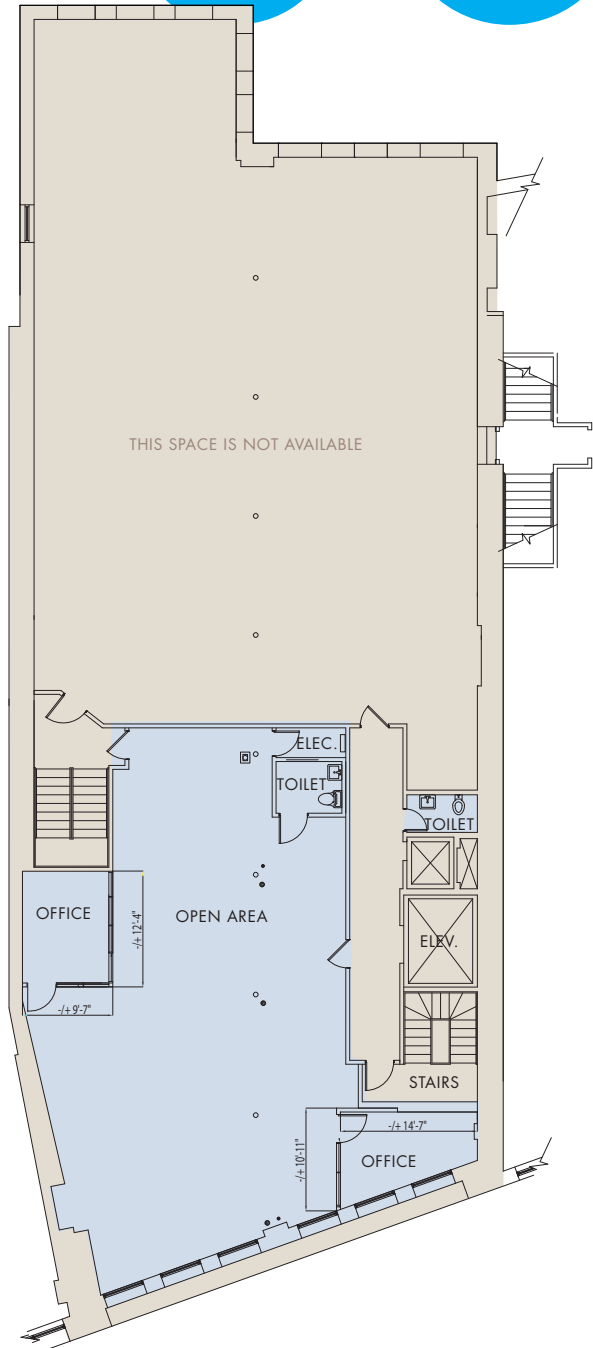
34-36

2,863 RSF on the 5th Floor

AVAILABLE:
JULY 1, 2017

- Large open area with exposed high ceilings
- 2 private offices with 7'-0" H glass walls
- Wood floors
- Central A/C
- One bathroom located within the space
- One additional shared bathroom
- Move-in condition

ELECTRIC:
\$3.15 PSF



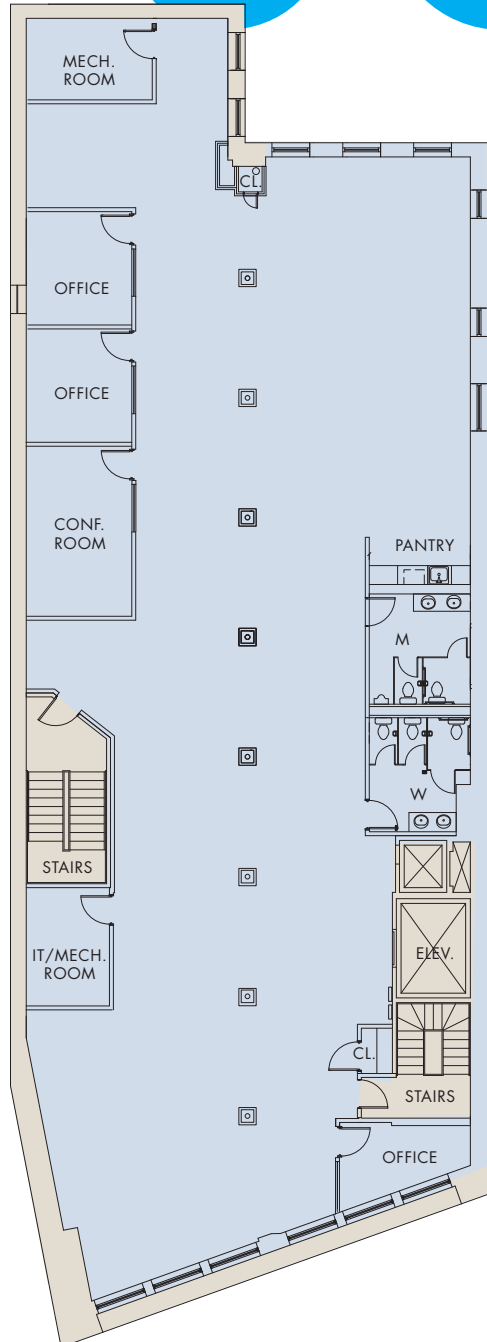
34-36

8,062 RSF on the 6th Floor

AVAILABLE:
JULY 1, 2017

- Large open area
- 3 offices and one conference room with glass walls
- Environmentally-friendly bamboo floors through-out
- Sheetrock ceiling
- Direct/Indirect light fixtures
- Pantry
- Central A/C
- Men's and women's bathrooms located within the space
- Loft look
- Move-in condition

ELECTRIC:
\$3.15 PSF

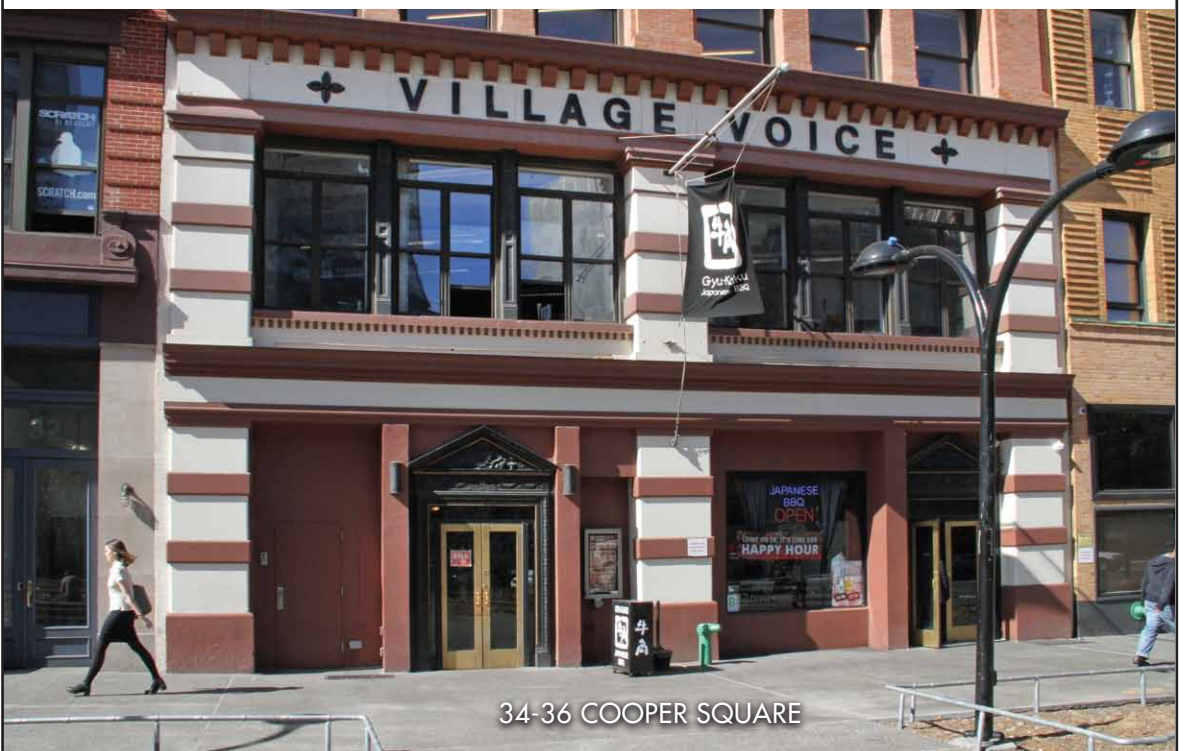




6TH FLOOR
8,062 RSF



5TH FLOOR
2,863 RSF



34-36 COOPER SQUARE