

667 MAD

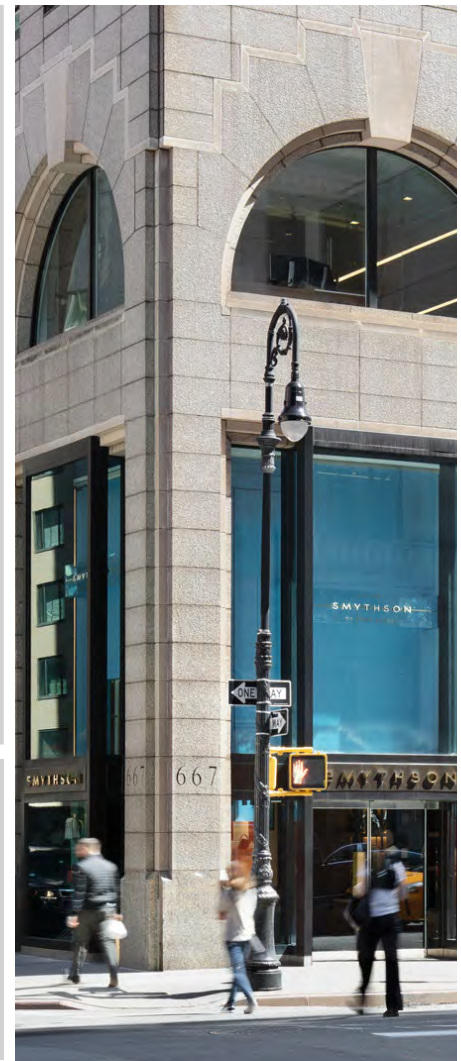
**MAGNIFICENT
TOWER SUITE**
on the **21st Floor**

New Pre-Built
Installation

AVAILABLE:
8,460 RSF

POSSESSION:
Immediate

ELECTRIC:
Direct



VIEWS OF CENTRAL PARK



667MADISON.COM



667 MAD

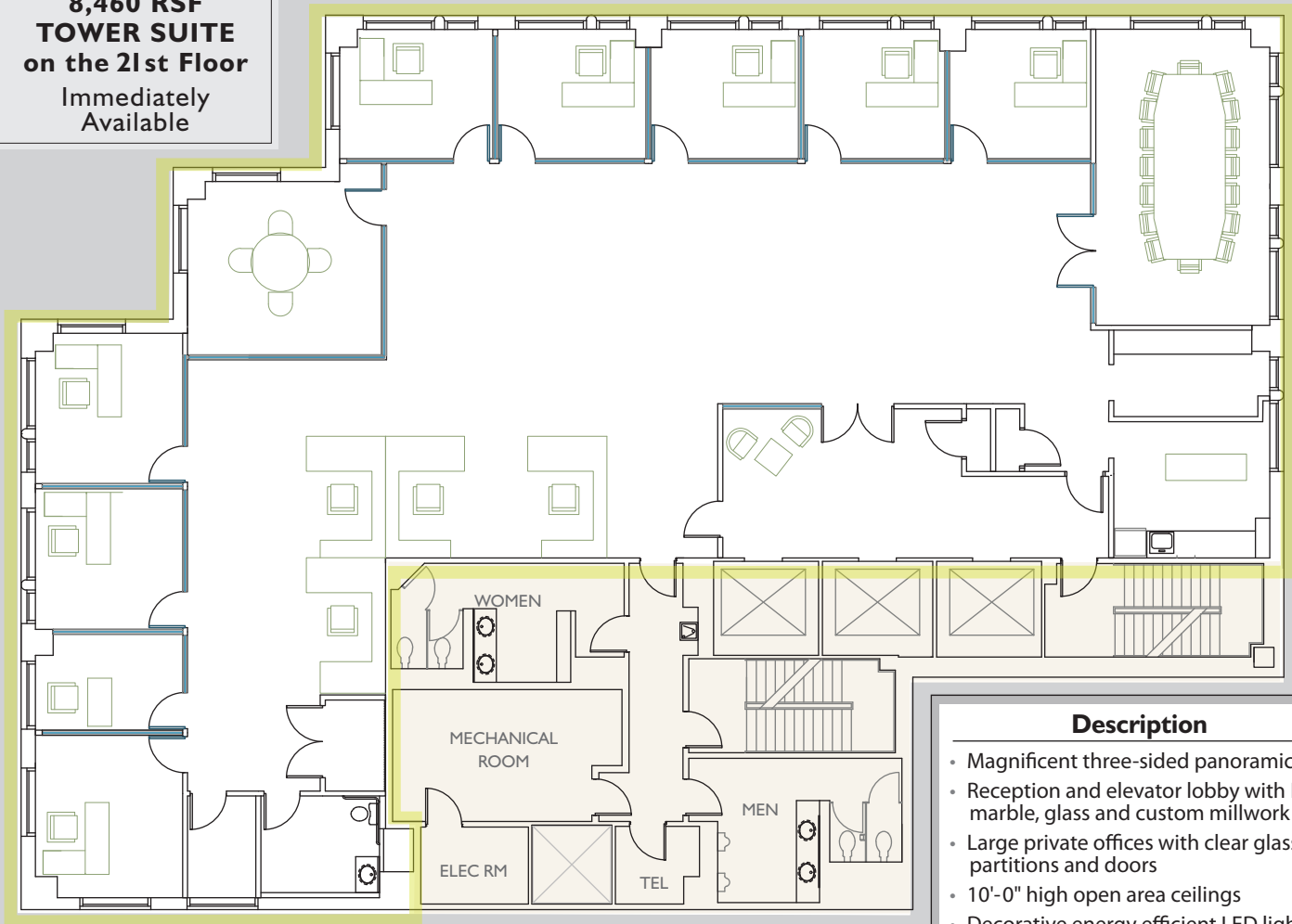
Tower Floor 21st Floor



61ST STREET

**8,460 RSF
TOWER SUITE
on the 21st Floor**
Immediately
Available

MADISON AVENUE



GRAPHIC SCALE



The furniture layout
is for position only.

Description

- Magnificent three-sided panoramic views
- Reception and elevator lobby with Italian marble, glass and custom millwork
- Large private offices with clear glass partitions and doors
- 10'-0" high open area ceilings
- Decorative energy efficient LED lighting throughout
- Stylish pantry with stone-top buffet serving area and high-end built-in appliances
- Private marble ADA accessible bathroom
- Wireless electronic window blinds
- Pre-built mailroom with premium millwork cabinets and counter space
- Broadloom carpeting throughout
- Cat 6 wiring/ample power
- Golf simulator
- In-house fitness club

For further information and inspection,
please contact:

Samia Bali: 212.308.3336 • samia.bali@hartzmountain.com

The Hartz Group, Inc.

667 Madison Avenue, New York, New York 10065

212.308.3336 - Phone • 212.838.8845 - Fax • www.667madison.com



667 MAD

Tower Floor 21st Floor



OFFICES



OFFICE VIEWS



LOBBY VIEW



PANTRY