

# Last Mile Industrial Warehouse

Move Your Business **closer** to the Port of NY & NJ

600 Jefferson Avenue, Secaucus, NJ

TOTAL: **338,661 SF**

LEASE PRICE: **\$18.00 psf NET**

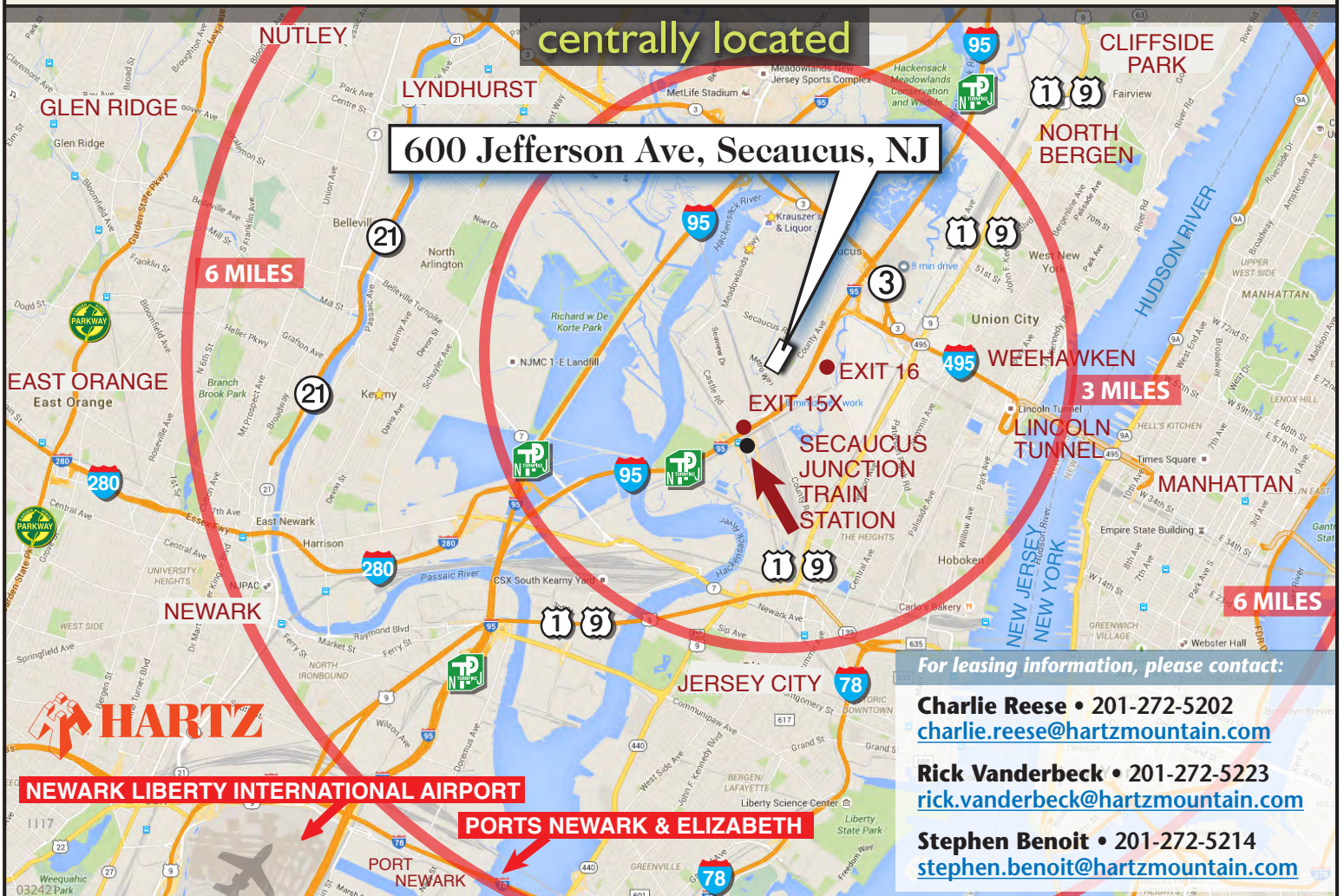


**Warehouse Available: JAN 1, 2022**

**338,661 SF** Total Available  
**211,612 SF** High Bay Warehouse – 32' clear ceiling ht  
**54,754 SF** Mezzanine Warehouse  
**58,765 SF** Under Warehouse Mezzanine – 19'-5" clear  
**8,530 SF** Mezzanine Office  
**5,000 SF** First Floor Office

- Mezzanine Floor Load: ..... 125 lbs/psf
- Under Mezzanine Floor Load: 400 lbs/psf
- Warehouse Floor Load: ..... 500-650 lbs/psf
- Fifty-one (51) Loading Docks
- ESRF Sprinkler System

**Comments:** Industrial building located directly off NJ Turnpike at Exit 15X. 2-1/2 miles to the Lincoln Tunnel. The building is within minutes of the Ports, Newark International Airport and Teterboro Airport. The Garden State Parkway, Routes 17, 46, and arteries to I-80 are easily accessible.



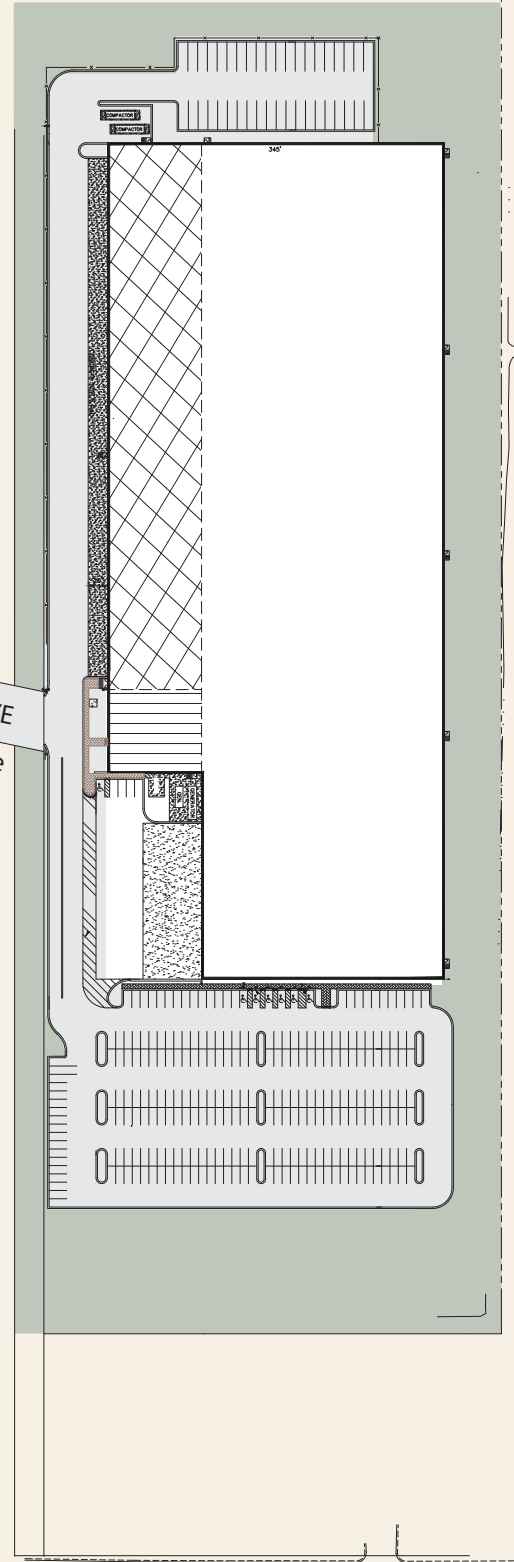
# Last Mile Industrial Warehouse

Move Your Business **closer** to the Port of NY & NJ

600 Jefferson Avenue, Secaucus, NJ

TOTAL: **338,661 SF**

**Warehouse Available: JAN 1, 2022**



JEFFERSON AVE  
← NJ Turnpike



SECAUCUS ROAD

For leasing information, please contact:

**Charlie Reese** • 201-272-5202  
[charlie.reese@hartzmountain.com](mailto:charlie.reese@hartzmountain.com)

**Rick Vanderbeck** • 201-272-5223  
[rick.vanderbeck@hartzmountain.com](mailto:rick.vanderbeck@hartzmountain.com)

**Stephen Benoit** • 201-272-5214  
[stephen.benoit@hartzmountain.com](mailto:stephen.benoit@hartzmountain.com)

# Last Mile Industrial Warehouse

Move Your Business **closer** to the Port of NY & NJ

600 Jefferson Avenue, Secaucus, NJ

TOTAL: **338,661 SF**

Warehouse Available: JAN 1, 2022



For leasing information, please contact:

Charlie Reese • 201-272-5202  
[charlie.reese@hartzmountain.com](mailto:charlie.reese@hartzmountain.com)

Rick Vanderbeck • 201-272-5223  
[rick.vanderbeck@hartzmountain.com](mailto:rick.vanderbeck@hartzmountain.com)

Stephen Benoit • 201-272-5214  
[stephen.benoit@hartzmountain.com](mailto:stephen.benoit@hartzmountain.com)