

Office Space Available

1600 Lower Road
Linden, New Jersey

Location: 1600 Lower Road, Linden, NJ

Available: 11,990 SF
1st Floor: 6,080 SF
2nd Floor: 5,910 SF

Rental: Upon Request

Possession: 05/01/16

Term: 5 years minimum

Utilities: The unit is separately metered for gas, electric is submetered. The user will pay a percentage of water.

Floor Load (Office): 100 lbs psf

Clear Ceiling Height: 10'-10"

Comments:

- Excellent back-office location within close proximity to the NJ Turnpike - I-95, Garden State Parkway, Ports Newark & Elizabeth, Rt 1&9, Newark Liberty International Airport and Manhattan.

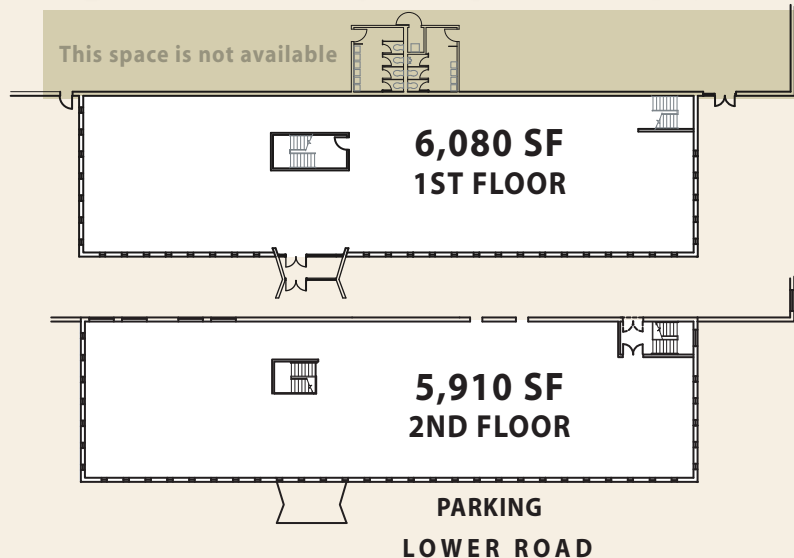
Economic Incentives:

- The New Jersey Economic Development Authority (EDA) offers a multitude of incentive programs to businesses located in New Jersey or want to relocate to New Jersey. Visit www.njeda.com for more information.

Move Your Business **closer** to the Port of NY & NJ



OFFICE SPACE • AVAILABLE FOR LEASE



For leasing information, please contact:

Ernie Christoph • 201-272-5201
ernie.christoph@hartzmountain.com

Charlie Reese • 201-272-5202
charlie.reese@hartzmountain.com

Rick Vanderbeck • 201-272-5223
rick.vanderbeck@hartzmountain.com



HARTZ

HartzMountain.com