

35 Dauphin Drive

Mechanicsburg, PA 17050

64,178 SF AVAILABLE



Property Description



| | | | |
|--------------------------|---|-------------------------|--|
| Total SF | 310,050 SF | Drive-Ins: | (1) 12' x 14' |
| SF Available: | 64,178 SF | Car Parking: | ± 25 |
| Office SF: | 3,400 SF | Trailer Parking: | ± 12 |
| Clear Height: | 32' - 36' | Lighting: | T5 HO Fluorescent Fixtures |
| Sprinkler System: | ESFR | Electrical: | 480/277 volt, 3-phase, 1,600 amp service |
| Loading Docks: | (11) 9' x 10' dock-high doors with 35,000 lb pit levelers | | |

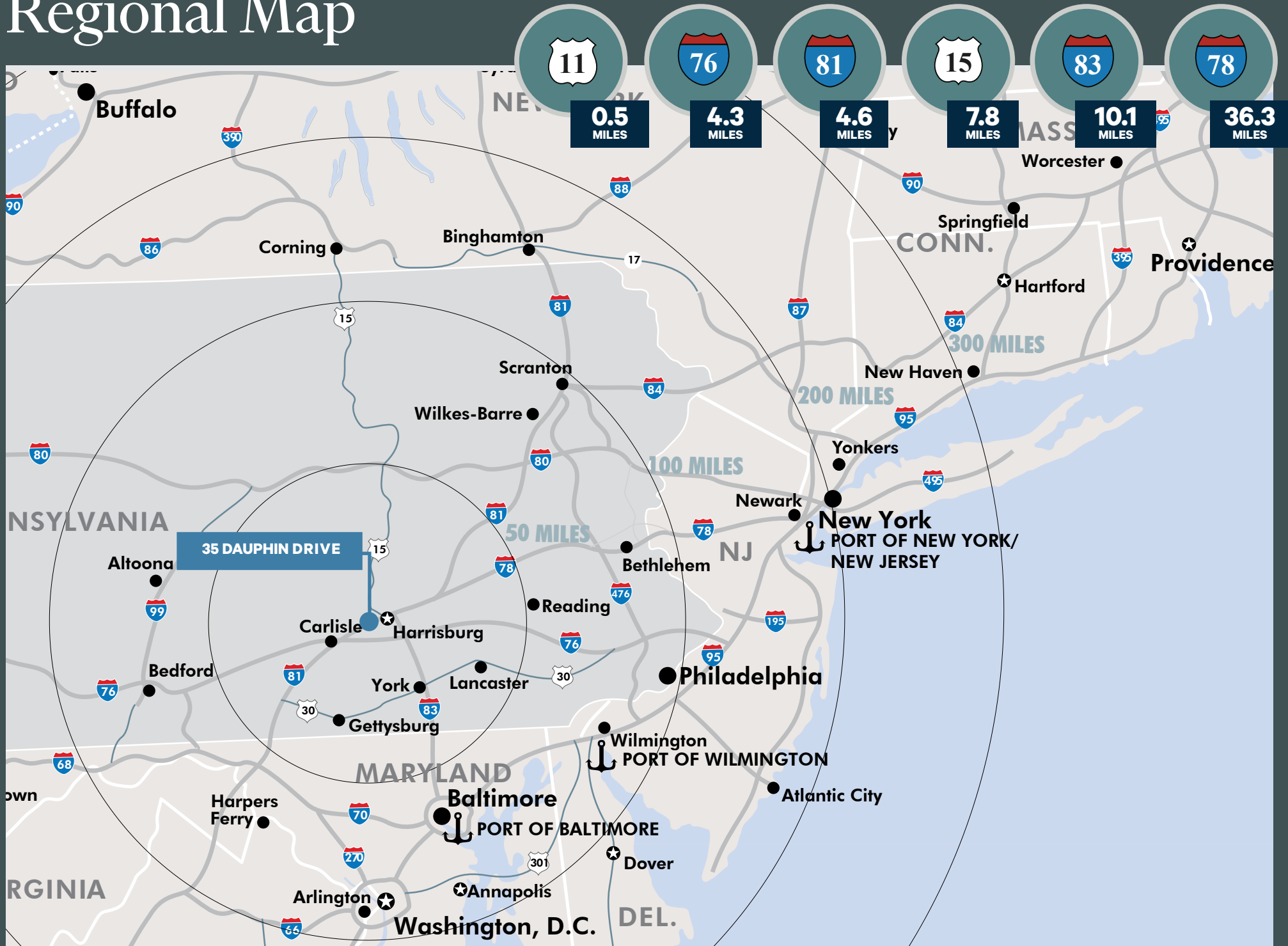
Site Plan

35 Dauphin Drive

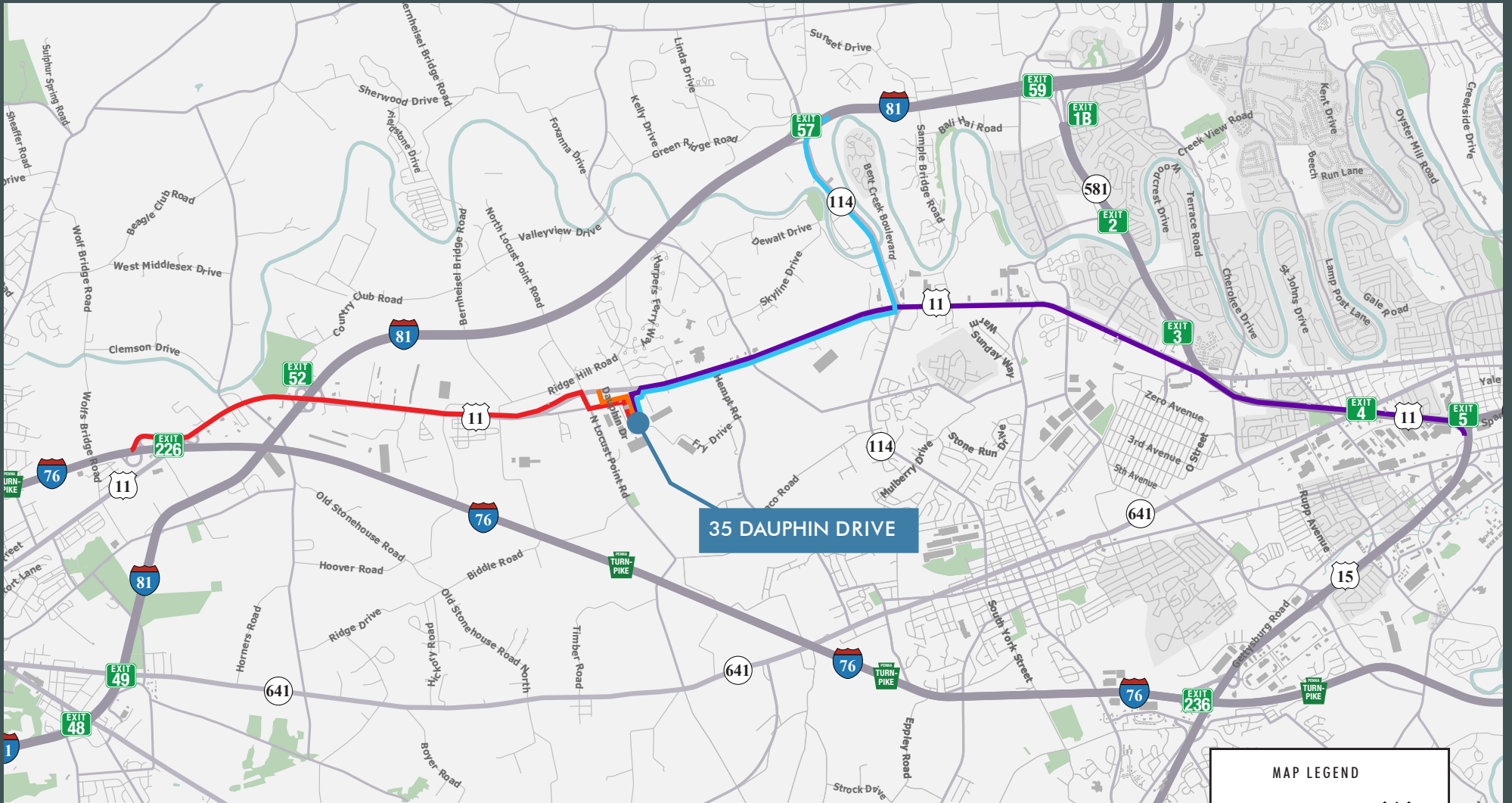


NOTE: 25 Knock-Out Panels for additional dock doors

Regional Map



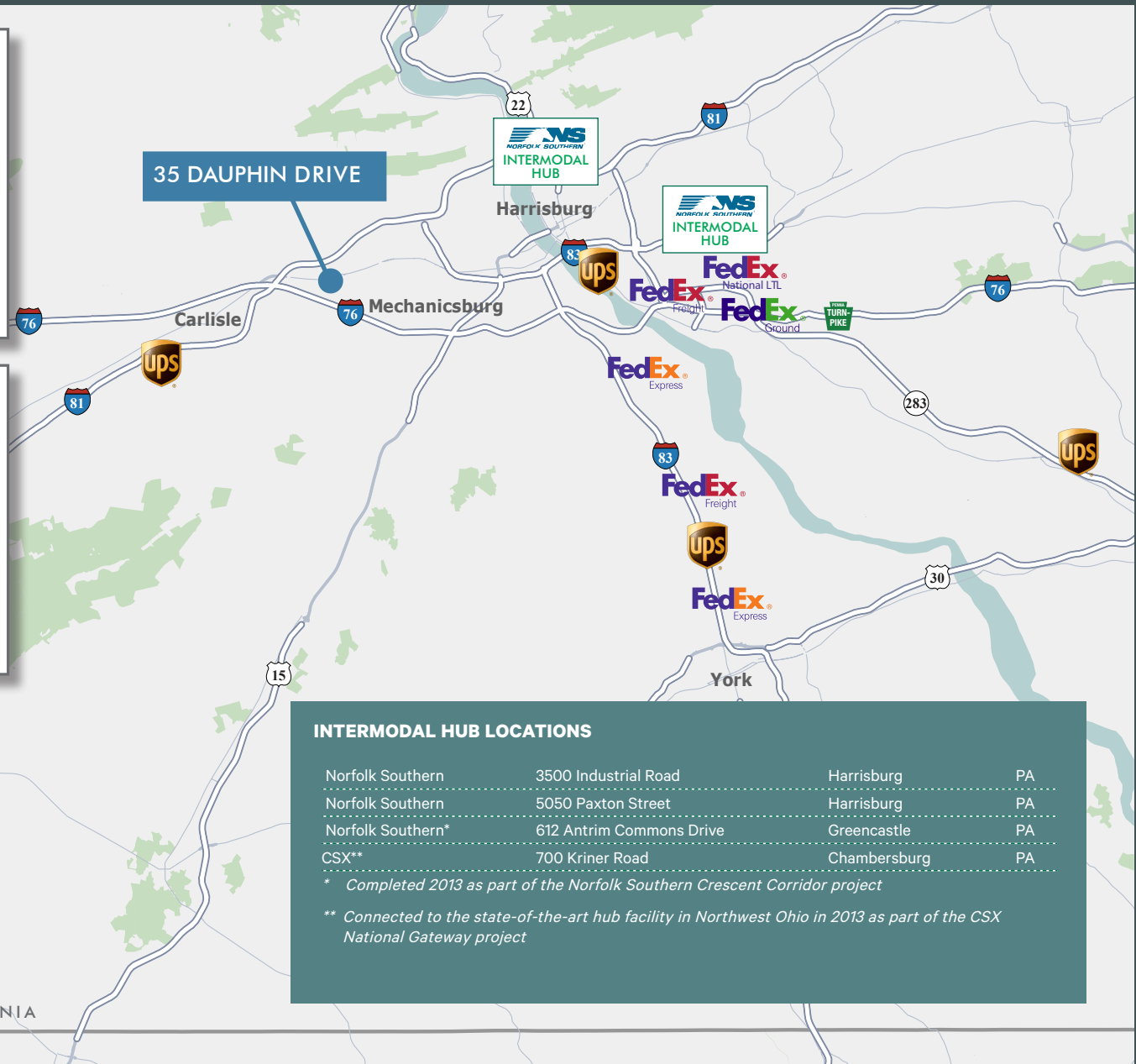
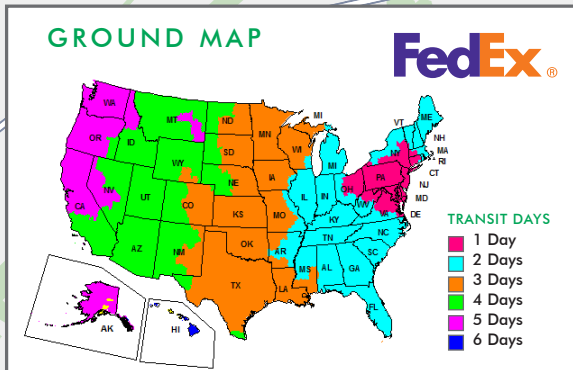
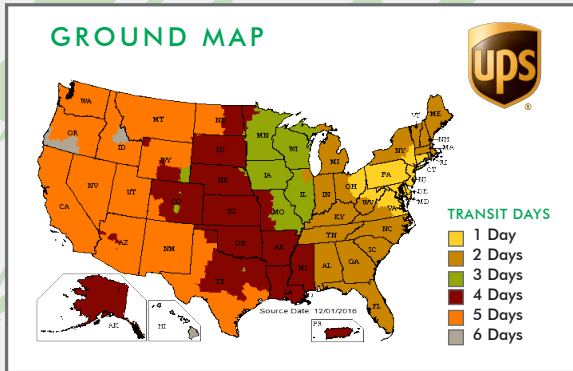
Local Map



35 DAUPHIN DRIVE

| MAP LEGEND | |
|--------------|----|
| 0.5 MILES to | 11 |
| 4.3 MILES to | 76 |
| 4.6 MILES to | 81 |
| 7.8 MILES to | 15 |

Logistics



INTERMODAL HUB LOCATIONS

| | | | |
|-------------------|--------------------------|--------------|----|
| Norfolk Southern | 3500 Industrial Road | Harrisburg | PA |
| Norfolk Southern | 5050 Paxton Street | Harrisburg | PA |
| Norfolk Southern* | 612 Antrim Commons Drive | Greencastle | PA |
| CSX** | 700 Kriner Road | Chambersburg | PA |

* Completed 2013 as part of the Norfolk Southern Crescent Corridor project

** Connected to the state-of-the-art hub facility in Northwest Ohio in 2013 as part of the CSX National Gateway project



Contact Us

Vincent Ranalli

Executive Vice President
+1 610 251 5194
vincent.ranalli@cbre.com
Licensed: PA, NJ

Anthony Gruenling, Jr.

Senior Associate
+1 610 251 5108
tony.gruenling@cbre.com
Licensed: PA

Andrew Belcher

Associate
+1 484 567 2475
andrew.belcher@cbre.com
Licensed: PA

CBRE, Inc.

555 E. Lancaster Avenue, Suite 120
Radnor, PA 19087
+1 610 251 0820
www.cbre.us/philadelphia
Licensed Real Estate Broker

© 2021 CBRE, Inc. All rights reserved. This information has been obtained from sources believed reliable, but has not been verified for accuracy or completeness. You should conduct a careful, independent investigation of the property and verify all information. Any reliance on this information is solely at your own risk. CBRE and the CBRE logo are service marks of CBRE, Inc. All other marks displayed on this document are the property of their respective owners, and the use of such logos does not imply any affiliation with or endorsement of CBRE. Photos herein are the property of their respective owners. Use of these images without the express written consent of the owner is prohibited.

