

Industrial Warehouse  
Space Available

Move Your Business **closer** to the Port of NY & NJ

77 Metro Way, Secaucus, NJ **189,029 SF Warehouse Space Available:**

**2 UNITS**

**122,094 SF Immediate**

**66,935 SF 11/1/2025**



- |   |  |  |
|---|--|--|
| <ul style="list-style-type: none"><li>• Unit A: 122,094 SF</li><li>• Available: Immediate</li><li>• Eleven (11) Loading Docks</li></ul> | <ul style="list-style-type: none"><li>• Unit B: 66,935 SF</li><li>• Available: 11/1/2025</li><li>• Eleven (11) Loading Docks</li><li>• Two (2) Drive Ins</li></ul> | <ul style="list-style-type: none"><li>• Term: 5 years minimum</li><li>• Ceiling Height: 27'-0"</li><li>• Column Spacing: 36'-0" x 42'-0"</li><li>• Floor Load (Warehouse): 300 lbs psf</li></ul> |
|---|--|--|



**3D TOUR**  
122,094 SF  
LINK

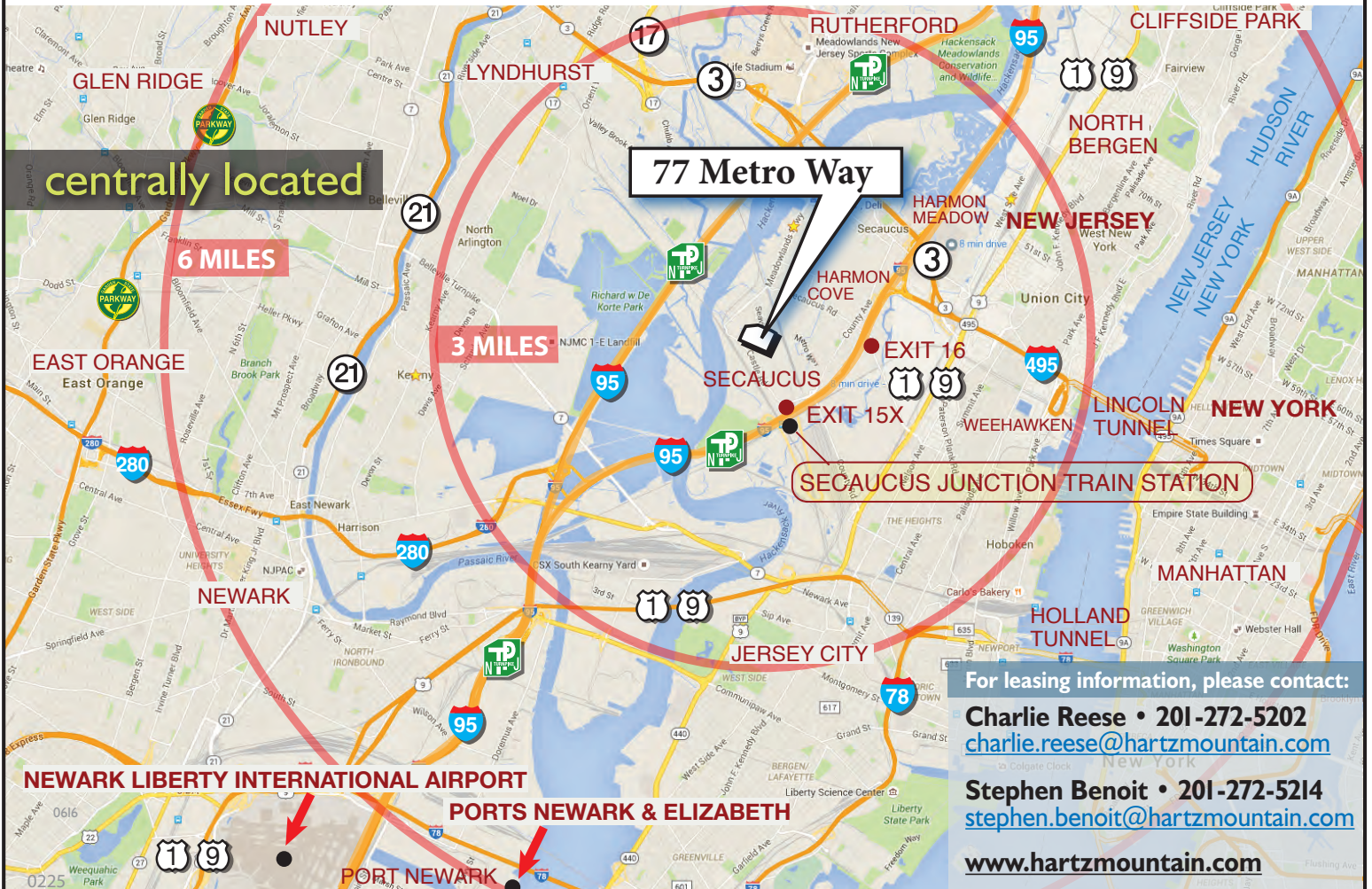
**Comments:**

- Industrial building located directly off NJ Turnpike at Exit 15X. 3 miles to the Lincoln Tunnel. The building is within minutes of the Ports, Newark International Airport and Teterboro Airport. The Garden State Parkway, Routes 17, 46, and arteries to I-80 are easily accessible.

**Economic Incentives:**

- The New Jersey Economic Development Authority (EDA) offers a multitude of incentive programs.

Visit [www.njeda.com](http://www.njeda.com) for more info.

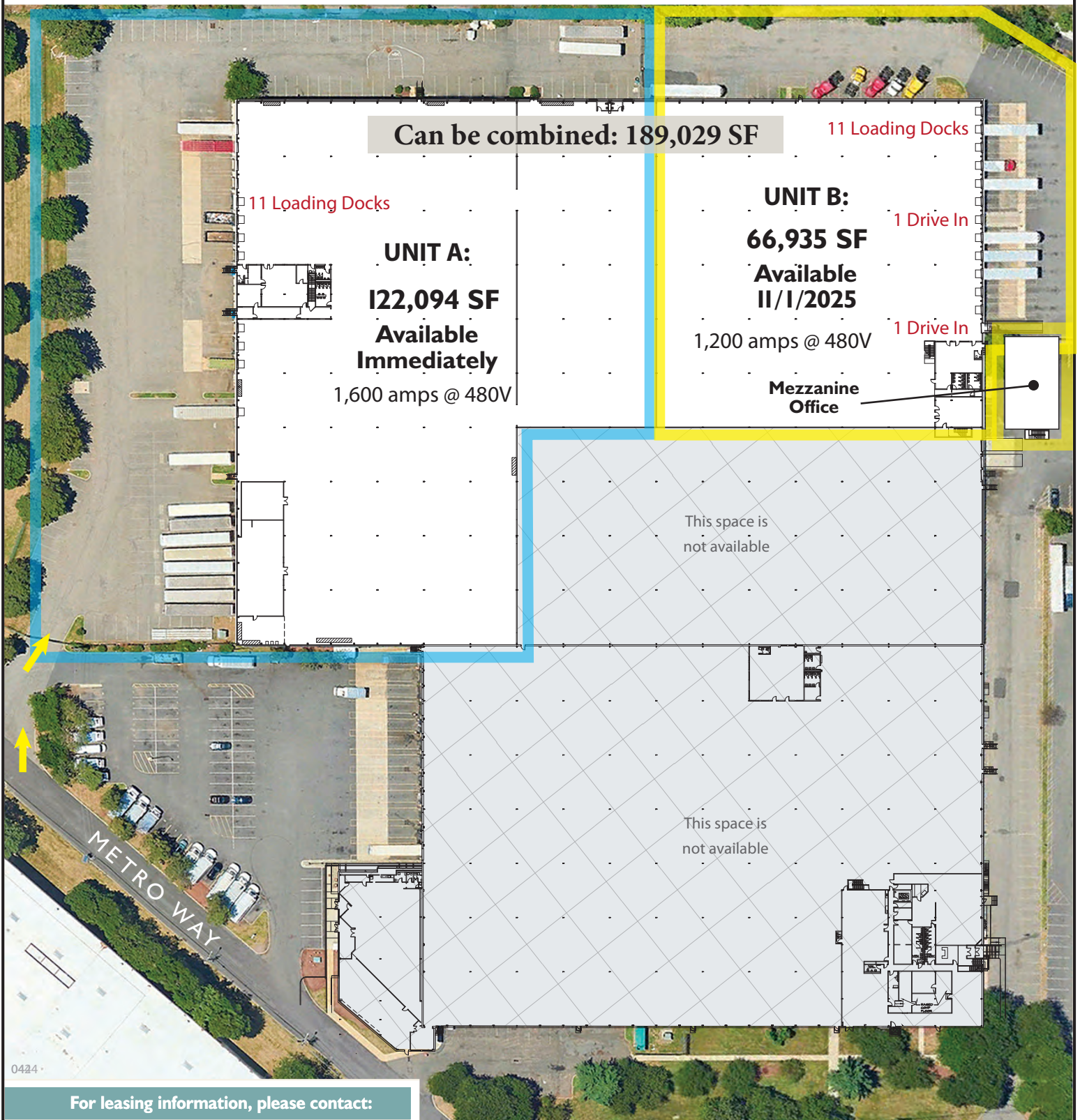




Industrial Warehouse  
Space Available

Move Your Business **closer** to the Port of NY & NJ

77 Metro Way, Secaucus, New Jersey • 6 miles to the Ports



For leasing information, please contact:



Charlie Reese • 201-272-5202  
[charlie.reese@hartzmountain.com](mailto:charlie.reese@hartzmountain.com)

Stephen Benoit • 201-272-5214  
[stephen.benoit@hartzmountain.com](mailto:stephen.benoit@hartzmountain.com)