

# MEADOWLANDS LOGISTICS CENTER



## INDUSTRIAL / DISTRIBUTION / DATA CENTER

Centrally located & ready to be built

**Class A Building: 775,000 SF**

**Available: 4Q 2026**

436 Car Parking Spaces

134 Banked Car Parking

232 Trailer Parking

96 Loading Docks

4 Drive In

89 Loading Docks Future Available

Ceiling Height: 40'-0" Clear



**AVAILABLE: 4Q 2026 • 775,000 SF INDUSTRIAL / DISTRIBUTION / DATA CENTER**

Charlie Reese • 201-272-5202  
[charlie.reese@hartzmountain.com](mailto:charlie.reese@hartzmountain.com)

Stephen Benoit • 201-272-5214  
[stephen.benoit@hartzmountain.com](mailto:stephen.benoit@hartzmountain.com)

Hartz Mountain Industries, Inc.  
Leasing Department • Phone: 201.348.1200  
[www.hartzmountain.com](http://www.hartzmountain.com)





3



Provides Peak-Hour Shuttle Service to & from Secaucus Junction Train Station  
[www.ezride.org](http://www.ezride.org)

**FREE SERVICE**



**HARMON MEADOW**  
to and from  
**SECAUCUS JUNCTION TRAIN STATION**

**Weekday Peak-hour Shuttle Service**

**NJ TRANSIT BUS SERVICE**  
#78, 83W, 85, 121, 320

Buses service the entire region including Midtown, Newark PENN. PATH connections, Secaucus Junction Train Station, American Dream, Hoboken, Harmon Cove, Hudson-Bergen Light Rail, NY Waterway Ferry connections and North Bergen.

### MEADOWLANDS LOGISTICS CENTER

**SHUTTLE STOP**  
**BUS STOP**  
#78  
#85,  
#320

**SHUTTLE STOP**  
**BUS STOP**  
#85,  
#320

**SHUTTLE STOP**  
**BUS STOP**  
#78  
#85,  
#320

**SHUTTLE STOP**

Paterson Plank Road

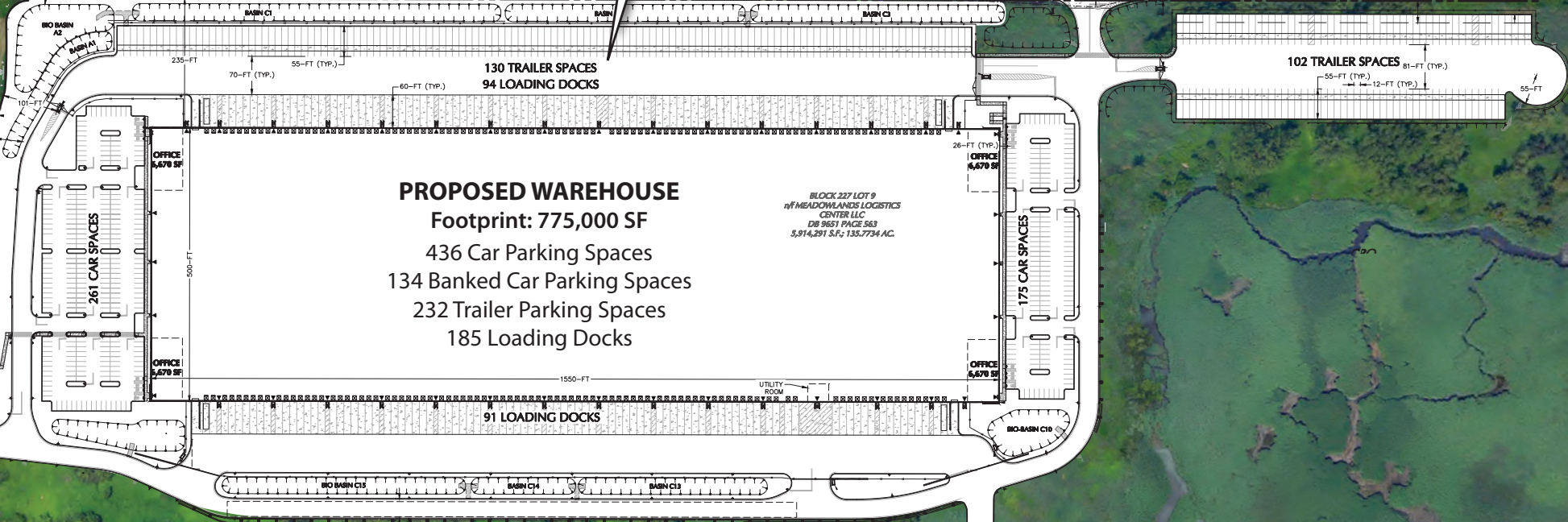
Park Plaza Drive

Westside Avenue

#### PROPOSED WAREHOUSE

Footprint: 775,000 SF  
436 Car Parking Spaces  
134 Banked Car Parking Spaces  
232 Trailer Parking Spaces  
185 Loading Docks

BLOCK 227 LOT 9  
M MEADOWLANDS LOGISTICS CENTER LLC  
DB 9651 PAGE 563  
5,914,291 S.F.; 135.7734 AC.



**BUS STOP**  
#83 W,  
#121

**BUS STOP**  
#83 W,  
#121

**BUS STOP**  
#83 W,  
#121

# MEADOWLANDS LOGISTICS CENTER





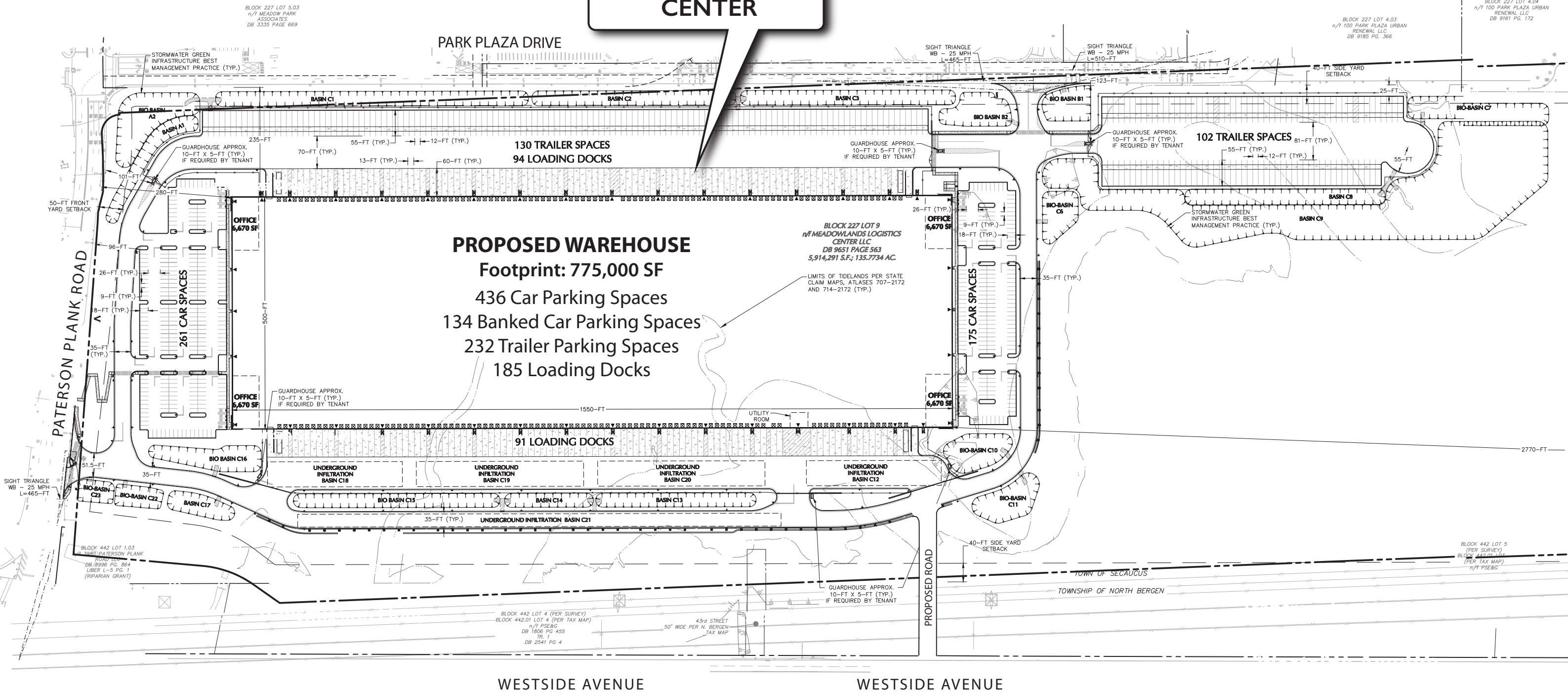


# MEADOWLANDS LOGISTICS CENTER





# MEADOWLANDS LOGISTICS CENTER



# MEADOWLANDS LOGISTICS CENTER







# MEADOWLANDS LOGISTICS CENTER

