

**1200 HARBOR BLVD**  
*Weehawken, New Jersey*



**5TH FLOOR PLAN**

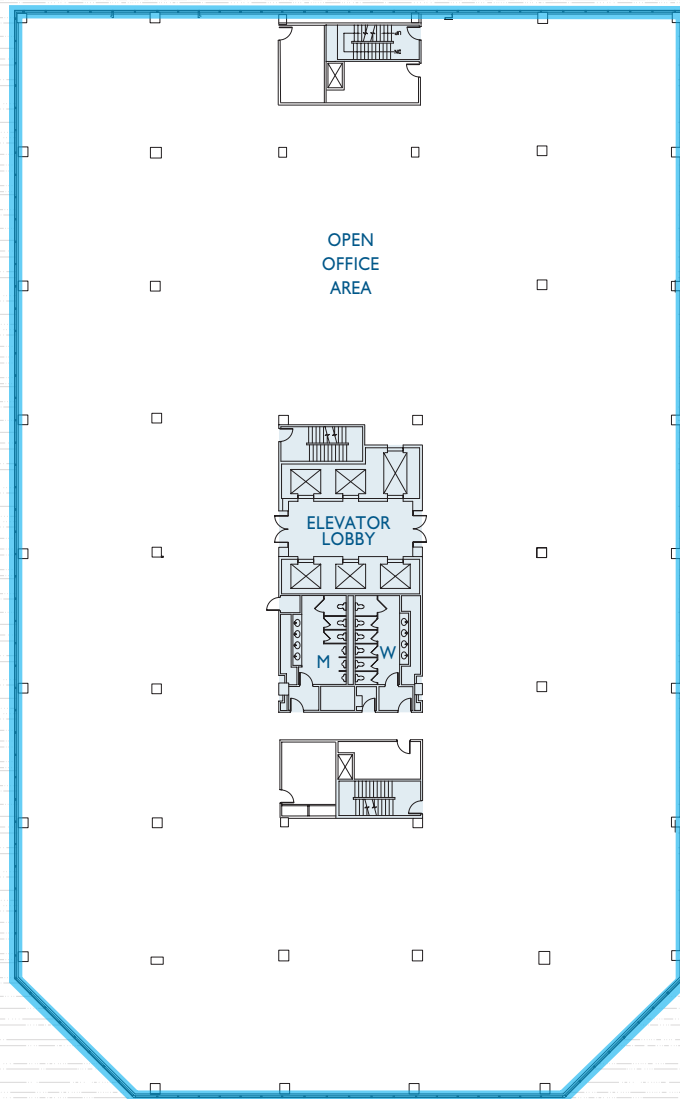
**43,663 SF**

Terms Upon Request



RIVER WALK & HOBOKEN POINT RESIDENTIAL

**43,663 SF**  
AVAILABLE



**5th**  
FLOOR

**Space Available:**

**Third Floor:** 34,104 SF

**Fourth Floor:** 43,663 SF

**Fifth Floor:** 43,663 SF

**Eighth Floor:** 34,420 SF & 13,956 SF

**Ninth Floor:** 23,780 SF & 11,560 SF

**Tenth Floor:** 23,270 SF & 4,742 SF

**Total:** 233,158 SF

**Rental:** Upon Request

**Possession:** Immediate

**Term:** 5 years minimum

**Structure:** Steel Frame

**Exterior:** Insulated glass curtain wall in thermal break system

**Floor-to-Floor Heights:** 13'-9"

**Clear Ceiling Heights:** 9'-0"

**Floor Load:** 100 LBS PSF

**HVAC:** Cooling tower, chiller, hot water baseboard, heat exchangers, VAV.

**Fire Protection:**

Fully sprinklered, manual pull stations to activate voice evacuation system, automatic smoke alarm.

**Elevators:** Five (5) Passenger  
One (1) Freight

**Fiber:** Multiple fiber providers are available, including Optimum, Verizon and ATT.

**Electrical:** Primary service 13.2 KV from PSE&G.

VIEWS OF  
MANHATTAN

VIEW OF THE  
GEORGE  
WASHINGTON  
BRIDGE

*For further information or to schedule an inspection contact:*

**Charlie Reese • 201-272-5202**  
[charlie.reese@hartzmountain.com](mailto:charlie.reese@hartzmountain.com)

**Stephen Benoit • 201-272-5214**  
[stephen.benoit@hartzmountain.com](mailto:stephen.benoit@hartzmountain.com)



**HARTZ**

A Hartz Mountain Property